

## Introduction

Floor Trunking System is designed to be place on concrete slabs, and covered by screed or under the raised floor for cable installations. Floor Trunking System guarantee safe cable routing on the floor and ensure flexibility of movement of outlet locations.

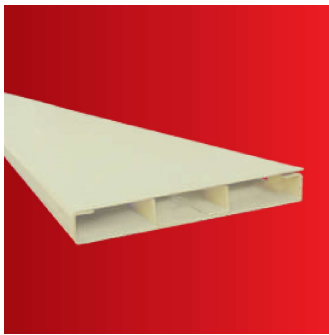
Floor Trunkings are use for cable installations including electrical, ELV( telecommunication & data), BMS, fire protection, security systems etc.

PRISMA Floor Trunkings are designed as per international standards to cater different industry requirements.

PRISMA Floor Trunkings completed with removable lid & range of standard accessories for ensure the quality & faster installation. All accessories comes with appropriate fasteners to firmly fix on to trunking as a complete solution.

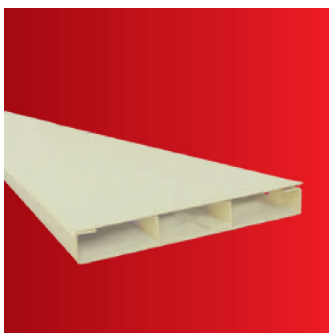
PRISMA has range of well designed Floor Trunking accessories to cater installation requirements as per site conditions.

PRISMA Under Floor Trunkings are made out of Electro Galvanized sheet or HDGA and with higher corrosion resistance.



**Under Floor Trunking**

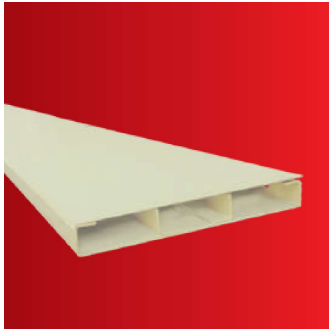
Part No	Trunking Width	Trunking Height	Thickness		Nos. of Compartment
			Base	Lid	
UFT-1CMPT-100-40	100	40	1.0	1.2	1
UFT-1CMPT-150-40	150	40	1.0	1.2	1
UFT-2CMPT-150-40	150	40	1.0	1.2	2
UFT-3CMPT-150-40	150	40	1.0	1.2	3
UFT-2CMPT-300-40	300	40	1.2	1.5	2
UFT-3CMPT-300-40	300	40	1.2	1.5	3
UFT-2CMPT-450-40	450	40	1.5	2.0	2
UFT-3CMPT-450-40	450	40	1.5	2.0	3
UFT-1CMPT-100-60	100	60	1.0	1.2	1
UFT-1CMPT-150-60	150	60	1.0	1.2	1
UFT-2CMPT-150-60	150	60	1.0	1.2	2
UFT-3CMPT-150-60	150	60	1.0	1.2	3
UFT-2CMPT-300-60	300	60	1.2	1.5	2
UFT-3CMPT-300-60	300	60	1.2	1.5	3
UFT-2CMPT-450-60	450	60	1.5	2.0	2
UFT-3CMPT-450-60	450	60	1.5	2.0	3



**Flush Floor Trunking**

Part No	Trunking Width	Trunking Height	Thickness		Nos. of Compartment
			Base	Lid	
FFT-1CMPT-100-40	100	40	1.0	1.0	1
FFT-1CMPT-150-40	150	40	1.0	1.0	1
FFT-2CMPT-150-40	150	40	1.0	1.0	2
FFT-3CMPT-150-40	150	40	1.0	1.0	3
FFT-2CMPT-300-40	300	40	1.2	1.2	2
FFT-3CMPT-300-40	300	40	1.2	1.2	3
FFT-2CMPT-450-40	450	40	1.5	1.5	2
FFT-3CMPT-450-40	450	40	1.5	1.5	3

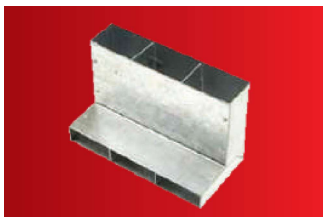
Part No	Trunking Width	Trunking Height	Thickness		Nos. of Compartment
			Base	Lid	
FFT-1CMPT-100-60	100	60	1.5	2	1
FFT-1CMPT-150-60	150	60	1.5	2	1
FFT-2CMPT-150-60	150	60	1.5	2	2
FFT-3CMPT-150-60	150	60	1.5	2	3
FFT-2CMPT-300-60	300	60	1.5	2	2
FFT-3CMPT-300-60	300	60	1.5	2	3
FFT-2CMPT-450-60	450	60	1.5	2	2
FFT-3CMPT-450-60	450	60	1.5	2	3



**Raised Floor Trunking**

Part No	Trunking Width	Trunking Height	Thickness		Nos. of Compartment
			Base	Lid	
FFT-1CMPT-100-40	100	40	1.0	1.0	1
FFT-1CMPT-150-40	150	40	1.0	1.0	1
FFT-2CMPT-150-40	150	40	1.0	1.0	2
FFT-3CMPT-150-40	150	40	1.0	1.0	3
FFT-2CMPT-300-40	300	40	1.2	1.2	2
FFT-3CMPT-300-40	300	40	1.2	1.2	3
FFT-2CMPT-450-40	450	40	1.5	1.5	2
FFT-3CMPT-450-40	450	40	1.5	1.5	3

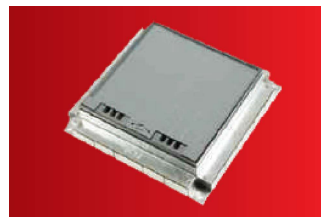
## Accessories



Vertical Access Box



Junction Box



Service Outlet Box



Reducer



Trunking Support Bracket



Floor Trunking Coupler