

Introduction

Perforated Cable Trays are used for cable installations including electrical, ELV (telecommunication & data), BMS, fire protection, security systems etc. Perforations are to enhance the air movement to increase the current carrying capacity of cables and also for tie up the cables to the cable tray.

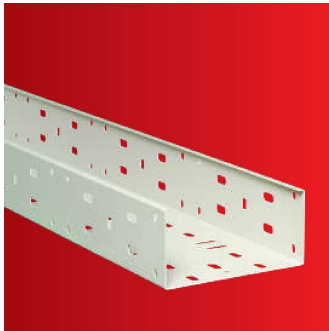
PRISMA Cable Trays are designed as per international standards & slot patterns are designed as per industry standards for to easy installation of cables.

PRISMA Cable Tray System can fix as cantilever or hanging methods: which can select as per location. All accessories come with appropriate fasteners to firmly fix on to trays to ensure a quality & faster installation.

PRISMA comes with three type of Cable Tray Covers to give better protection for the cables installed.

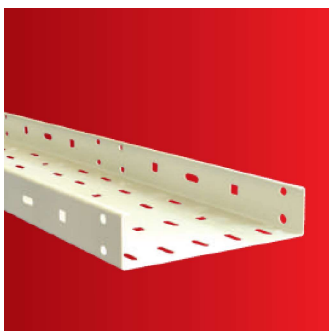
PRISMA has range of well designed Cable Tray accessories to cater installation requirements as per site conditions. It has provisions to accommodate any type of wiring accessories for neat & professional installation.

PRISMA cable trays are made out of different materials and Epoxy Polyester powder coated in fine texture finish. Other materials, colors & finishes are available on request.



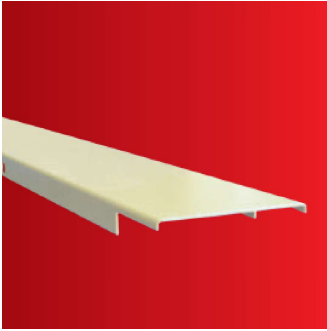
Cable Tray- Standard

Part No	Tray Width	Flange Height	Thickness	Weight
CT-SR-100-50	100	50	1.0	2.12
CT-SR-150-50	150	50	1.0	2.61
CT-SR-225-50	225	50	1.2	4.00
CT-SR-300-50	300	50	1.2	4.88
CT-SR-450-50	450	50	1.5	8.29
CT-SR-600-50	600	50	1.5	10.50
CT-SR-750-50	750	50	2.0	16.94
CT-SR-900-50	900	50	2.0	19.95
CT-SR-100-75	100	75	1.2	3.11
CT-SR-150-75	150	75	1.2	3.70
CT-SR-225-75	225	75	1.2	4.59
CT-SR-300-75	300	75	1.5	6.84
CT-SR-450-75	450	75	2.0	12.22
CT-SR-600-75	600	75	2.0	15.16
CT-SR-750-75	750	75	2.0	18.10
CT-SR-900-75	900	75	2.0	21.05



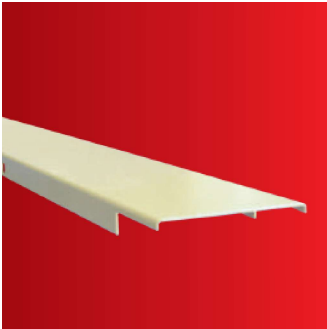
Cable Tray- Green

Part No	Tray Width	Flange Height	Thickness	Weight
CT-GR-100-50	100	50	1.0/1.2/1.5	1.57/1.88/2.36
CT-GR-200-50	200	50	1.0/1.2/1.5	2.36/2.83/3.53
CT-GR-300-50	300	50	1.0/1.2/1.5	3.14/3.77/4.71
CT-GR-400-50	400	50	1.5	5.89
CT-GR-500-50	500	50	1.5	7.07
CT-GR-600-50	600	50	1.5	8.24
CT-GR-150-75	150	75	1.2/1.5	2.83/3.53
CT-GR-300-75	300	75	1.2/1.5	4.24/5.30
CT-GR-450-75	450	75	1.5	7.07
CT-GR-600-75	600	75	1.5	8.83



Tray Lid - Standard

Part No	Tray Width	Flange Height	Thickness	Weight
CT-SR-CVS-100	100	15	1.0	1.63
CT-SR-CVS-150	150	15	1.0	2.81
CT-SR-CVS-225	225	15	1.0	3.69
CT-SR-CVS-300	300	15	1.0	3.98
CT-SR-CVS-450	450	15	1.2	5.75
CT-SR-CVS-600	600	15	1.2	7.52
CT-SR-CVS-750	750	15	1.2	9.28
CT-SR-CVS-900	900	15	1.2	11.05



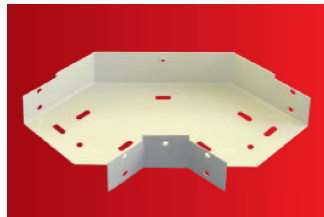
Tray Lid -Green

Part No	Tray Width	Flange Height	Thickness	Weight
CT-GR-CVS-100	100	15	1.0	1.18
CT-GR-CVS-150	150	15	1.0	1.57
CT-GR-CVS-200	200	15	1.0	1.96
CT-GR-CVS-300	300	15	1.0	2.75
CT-SR-CVS-400	400	15	1.2	4.51
CT-GR-CVS-450	450	15	1.2	5.75
CT-GR-CVS-500	500	15	1.2	5.18
CT-GR-CVS-600	600	15	1.2	6.12

Accessories



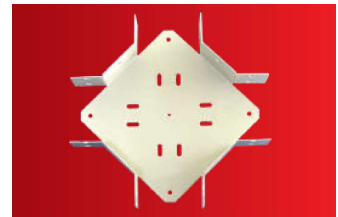
Coupler



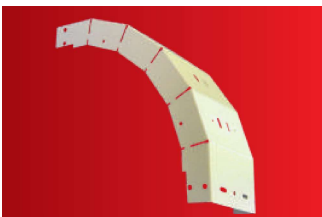
Flat 90° Bend



Flat Equal Tee



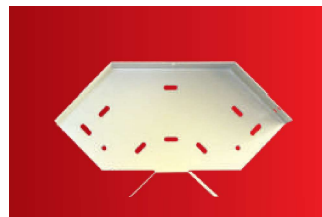
Flat 4way Intersection



Internal 90° Riser Bend



External 90° Riser Bend



Flat 45° Bend



Stop End